



International Journal for Innovative Engineering and Management Research

A Peer Reviewed Open Access International Journal

www.ijiemr.org

COPY RIGHT



ELSEVIER
SSRN

2019 IJIEMR. Personal use of this material is permitted. Permission from IJIEMR must be obtained for all other uses, in any current or future media, including reprinting/republishing this material for advertising or promotional purposes, creating new collective works, for resale or redistribution to servers or lists, or reuse of any copyrighted component of this work in other works. No Reprint should be done to this paper, all copy right is authenticated to Paper Authors

IJIEMR Transactions, online available on 23rd Dec 2019. Link

[:http://www.ijiemr.org/downloads.php?vol=Volume-08&issue=ISSUE-12](http://www.ijiemr.org/downloads.php?vol=Volume-08&issue=ISSUE-12)

Title: **MODELING AND ANALYSIS OF GAS TURBINE ROTOR BLADE BY USING FEM**

Volume 08, Issue 12, Pages: 483-488.

Paper Authors

A.RAHUL KUMAR RAFFI MOHAMMED P.RAJESH BABU

Ramachandra College of Engineering, Eluru, A.P, India



USE THIS BARCODE TO ACCESS YOUR ONLINE PAPER

To Secure Your Paper As Per **UGC Guidelines** We Are Providing A Electronic Bar Code

MODELING AND ANALYSIS OF GAS TURBINE ROTOR BLADE BY USING FEM

¹A.RAHUL KUMAR ²RAFFI MOHAMMED ³P.RAJESH BABU

^{1,2,3}Department of Mechanical Engineering, RamachandraCollege of Engineering, Eluru.
mohammed_rafi336@yahoo.com

ABSTRACT: A Gas Turbine is an internal combustion engine that uses air as the working fluid. In the design of the blades is to find the frequency at which the resonance exists. Prototype building and testing of the blades is highly expensive and is a time-consuming process. Remedy to avoid prototype building is the Finite Element Analysis. But Finite Element Analysis throws a challenge in terms of the size of the model and analysis time. To build a 360-degree Rotor blade model in Finite Element Analysis with the required degree of accuracy and analysis is very difficult as it involves high configuration systems. Moreover, the time consumption for the analysis of a 360-degree model is high. To overcome this, in the present analysis, a concept called as "Cyclic symmetry Analysis " is utilized. The advantage of cyclic symmetry can be utilized only in the case of models which possess symmetry in terms of the axis. In the initial phase, Cyclic Symmetry Analysis Validation is performed with coarse mesh on the 360-degree model. The pre-stress Model analysis is also one another concept utilized in the present analysis to find out the frequency of the blade under various conditions of angular velocity. In Pre-stress model analysis initially, the model is stressed under the speed of the rotor wheel and the model is then vibrated to find its natural frequency under the stressed condition. Campbell diagrams are then constructed for the various nodal diameters to find the interference margins of the fundamental modes frequency like 1st bending, 1st Torsion, 2nd bending and 2nd Torsion.

Key Words:Finite element Analysis, Cyclic symmetry Analysis, Ansys, Campbell diagrams.

1. INTRODUCTION

Client The gas turbine is an internal combustion engine which uses the atmosphere as the operating liquid. The engine focuses the synthetic strength of the gas and transforms it into mechanical vitality using the vaporous vitality of the operating fluid (oxygen) to power the engine and the propeller, thus moving the aircraft[1,2]. The gas turbine's vital operation is very much like the steam power plant, apart from using air instead of water. Crisp air wind flows that carry it to the greater weight through blower. Then vitality will be included by showering fuel into the air but also illuminating it with the aim of creating an elevated-

temperature stream by burning. This heavy-temperature, high-weight fuel reaches a turbine where it breaks down to the weight of the fumes, yielding a full-time pole job. The job on the turbine blade is used to power, for instance, the blower and various gadgets, an electrical system that could be attached to the base. The vitality not used for duct job is shown in the gasses of the fumes, so they either have a elevated temperature or a low velocity. The gas turbine's cause chooses the scheme with the objective of boosting the most appealing composition of vitality. To regulate driving machines, aircraft, boats, electrical generators, or even reservoirs, gas turbines are used[5,6].

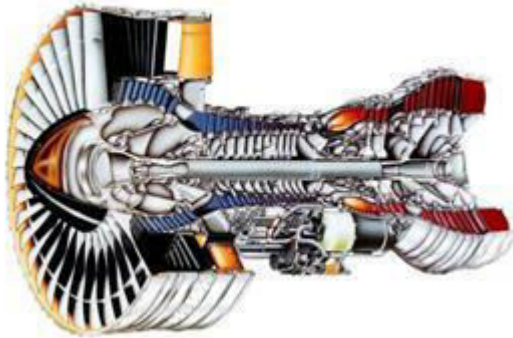


Figure 1: A Typical Cross Section of PW4000-94 Inch Engine

The "Brayton Cycle or Joule Cycle" is the main thermodynamic cycle on which gas turbine engines are centered. A temperature-entropy graph has been shown in Figure 1 for this ideal process as well as its implementation as a shut-off system gas turbine[3,4]. The process includes an isentropic gas pressure from state 1 to state 2; a continuous growth of weight heat to state Isotropic growth to state 4 in which research is carried out; and isobaric completion of process home to state 1. a pivoting pole links a blower to a turbine. The base communicates the energy that is essential to drive the blower as well as, for instance, an electrical generator transmits the equalization to a force. The radiator is a heater in the shut-off mode gas turbine in which cooking gasses or a nuclear origin pass warmth through thermally guiding cylinders to the operating liquid[7,8]. It is useful to understand indoor also outdoor ignition motors from time to time, irrespective of whether burning occurs in the operating liquid or in a territory separated from either the working liquid, yet in warm interaction with it. The combustion heated, shut-off mode gas turbine is a model of an external ignition engine, comparable to the steam power plant. For instance, vehicle engines, in which combustion occurs in the operating liquid flanked by a room and a cylinder, and open-cycle gas turbines, instead of indoor ignition engines[9,10].

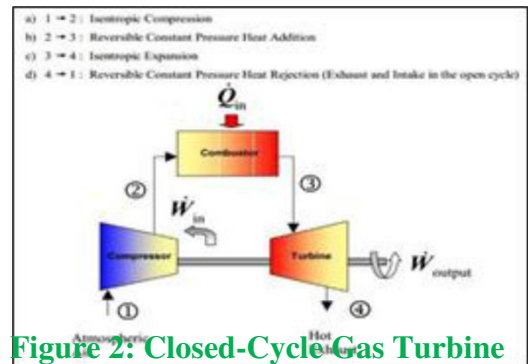


Figure 2: Closed-Cycle Gas Turbine

2. Working

Turbofan motors are establishing on business aircraft about the globe also contain upset the manner in which we travel. The turbofan motor capacities by method for a thermodynamic cycle where the air is infused into the motor, packed, combusted, extended, also depleted commencing the motor making a push to move the vehicle. These five stages are done by five noteworthy motor segments: the fan, blower (low as well as high weight), combustor (or burning chamber), turbine (in elevation and low weight), and fumes spout. Figure 3 below is a drawing of a cross-area turbofan[11,12]. The sections or lines were counted in this hand perspective. From start to correct, the water passes via the engine, starting at the engine (figure number 1) as well as moving towards the fumes spout Below are detailed descriptions of the sections and what occurs at each facility. The LPC is legally connected by the low-weight rotor with the motor and the low-weight turbine (LPT)[13,14]. The LPC has rotating edge pillars that force the water into the engine once again. As the wind rearward is restricted, the cross-sectional region of the LPC decreases, causing the water quantity to decrease. This indicates that the atmosphere is going to be pressurized as well as the heat is growing from the perfect gas law. It reaches the elevated-weight blower after the wind passes through the LPC[15]. The combustion takes place within the combustor, a

continuous room inside the center of the engine, which in Figure:5 is unit 3. The combustor is legally downstream of the HPC and directly upstream of the large-weight turbine. The justification for the combustor is by technique for the warmth alternative to contribute much more vitality to the wind stream. Fuel is mixed and mixed with greenhouse effect within the combustor. This fuel-air mixture is then lightened, causing an unusual temperature to increase and boosting the stream, pressing it backwards toward the high-weight turbine.

Figure 3: Components of a Turbofan engine

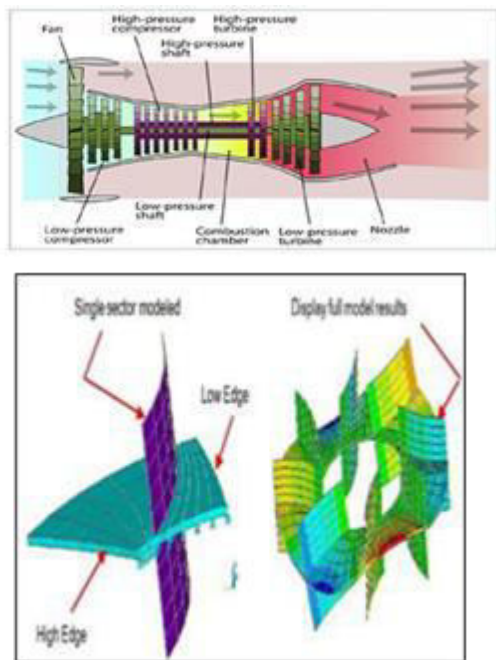


Figure 4: Cyclic Symmetry Definitions

3. CYCLIC SYMMETRY ANALYSIS:

Numerous auxiliary segments have geometric qualities which are rehashed about a hub of symmetry (for example circles, gears, impellers). We container characterize the

arrangement in wording of an essential fragment which is rehashed at similarly dispersed interims around the symmetry hub. On the off chance that the removal BC's of all sections are indistinguishable regarding the pivot of symmetry, we container investigate the whole structure as far as the mass also solidness attributes of a solitary portion. This strategy is designated "cyclic symmetry". Its essential bit of leeway is huge reserve funds in CPU/slipped by time and PC assets. An appropriate part speaks to an example that, whenever rehashed n times in a tube shaped organize framework, would yield the total structure. By utilizing the ANSYS Modal Cyclic Symmetry capacity we canister acquire the regular frequencies also mode states of the whole arrangement for a client endorsed scope of nodal measurements utilizing the model of a solitary segment. Using this technique, we can also conduct linear clasp examination. In ANSYS, cyclic symmetry is updated by characterizing imperative associations between the vital segment's elevated and low edges. The vital component is used repeatedly to satisfy the necessary connection of restriction. The significance of the essential circumstances is based on the determined "vowel sequence." For a model comprised of n sectors, the connection among harmonic index, k, and nodal diameter, d.

TABLE 1: Solid Blade Creation

Point No.	x	y	z	Point No.	x	y	z
1	0.00	11.22	0.00	26	8.80	24.72	0.00
2	2.45	11.27	0.00	27	12.25	25.77	0.00
3	4.90	12.50	0.00	28	14.70	26.51	0.00
4	7.35	13.48	0.00	29	17.15	26.80	0.00
5	9.80	14.26	0.00	30	19.60	27.08	0.00
6	12.25	14.80	0.00	31	22.05	26.90	0.00
7	14.70	14.99	0.00	32	24.50	26.41	0.00
8	17.15	15.09	0.00	33	26.95	26.00	0.00
9	19.60	15.04	0.00	34	29.40	24.88	0.00
10	22.05	14.80	0.00	35	31.85	23.08	0.00
11	24.50	14.50	0.00	36	34.30	21.07	0.00
12	26.95	14.01	0.00	37	36.75	18.97	0.00
13	29.40	13.43	0.00	38	39.20	16.88	0.00
14	31.85	12.89	0.00	39	41.65	12.20	0.00
15	34.30	11.68	0.00	40	44.10	8.87	0.00
16	36.75	10.29	0.00	41	46.55	5.00	0.00
17	39.20	8.92	0.00	42	49.00	0.00	0.00
18	41.65	8.91	0.00	43	0.00	11.22	0.00
19	44.10	4.66	0.00	44	19.60	15.02	0.00
20	46.55	1.86	0.00	45	0.00	12.26	0.00
21	49.00	0.00	0.00	46	18.29	27.00	0.00
22	0.00	11.22	0.00	47	29.21	12.93	0.00
23	2.45	13.77	0.00	48	46.77	0.00	0.00
24	4.90	21.41	0.00	49	29.20	24.88	0.00
25	7.35	23.28	0.00	50	49.00	0.34	0.00
				51	21.07	27.00	0.00

4. DESIGN AND ANALYSIS OF BLADE

Airfoil profile is based on the performance of the compressor. Information focuses are accommodated the cross-area of the Airfoil. Information focuses are then associated by utilizing the splines and after that joined to shape the zones in Ansys. Following are the data points considered for the airfoil profile.

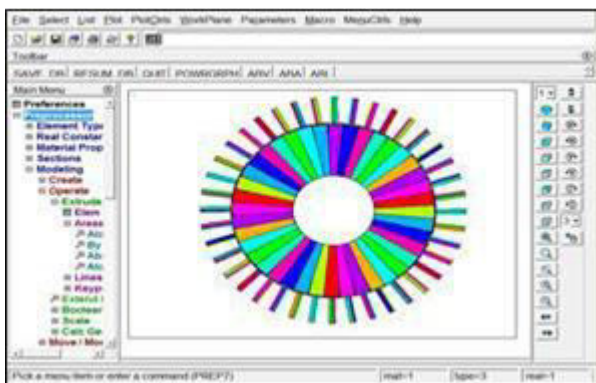


Figure 5: Solid Blade Creation

Base of the Airfoil is then extruded in the other direction to create rotor wheel so that a cyclic symmetry sector with a sector angle of 9 degree. Cyclic sector is then copied 40 times to form a complete stage of Rotor as shown in the below figure

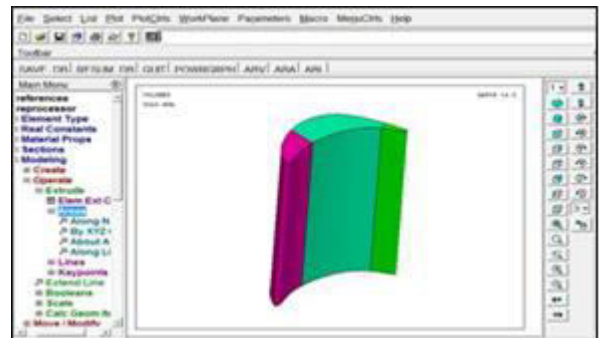


Figure 6: Rotor Wheel with Blades

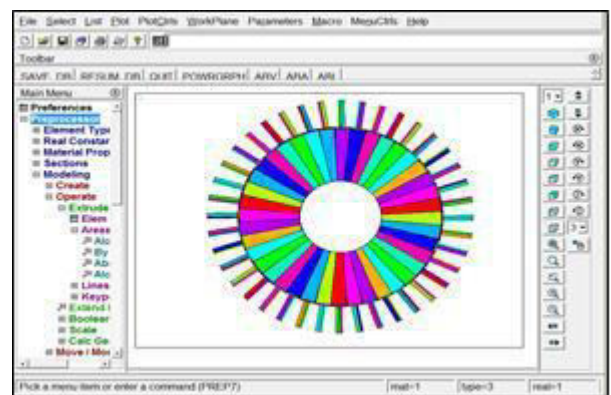


Figure 7: Mode Shapes for Campbell

5. RESULTS AND DISCUSSION:

A Campbell diagram is the most traditional way of finding the interference margin between the natural frequency and the external excitation frequency. It is usually constructed by taking the Speed along the X-Axis and Frequency (Hz) on the Y-Axis. Speed lines are plotted as vertical lines on the Campbell. Mode shapes and excitation lines are plotted as the Campbell for the complete speed range. In the present analysis, Campbell diagrams are constructed for all the Nodal Diameters i.e. from 0 to 3ND, 30 ND, and 45 ND.

Table 2: Frequency for Nodal Diameter 0- INCONEL 720

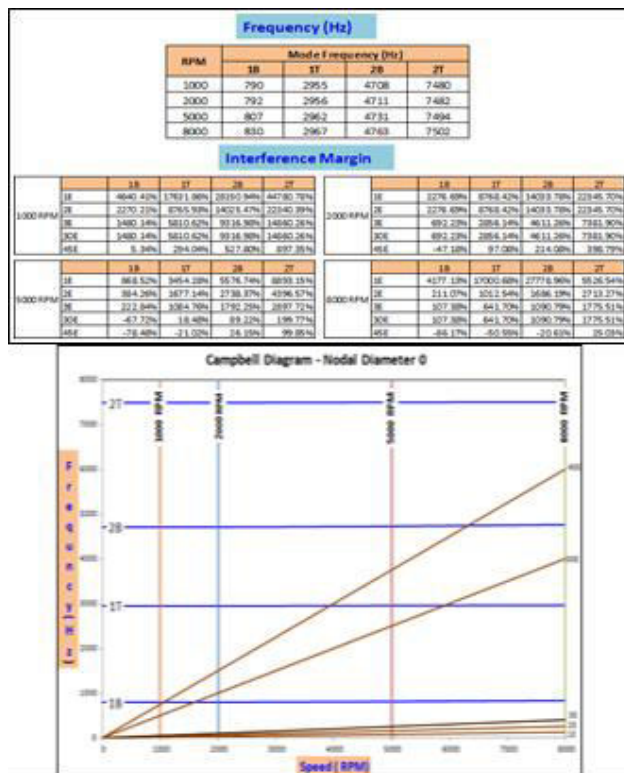


Figure 8: Campbell Diagram For Nodal Diameter 0 - Inconel 720

6. CONCLUSION AND FUTURE WORK:

From the above analysis results for the various nodaldiameters, it is observed that all the fundamental modes are having good margins. 1st Bending mode is having less margin when compared to the 1st Torsion, 2nd Bending, and 2nd Torsion. Also, it is observed that both considered materials are providing good margins for all the fundamental modes. Hence any one of the materials may be considered from the vibration safety of the blade. Excitations with the difference in the upstream and downstream counts may also be considered for the Campbell's. 1st Bending mode margin may also be improved by changing the airfoil shape without losing its efficiency if required by the manufacturer. The blade may also be analyzed for any of the speeds by using the

ANSYS APDL code developed. SLCF analysis may be performed on the blade by using the same cyclic symmetry model for the blade. Mesh convergence can be easily achieved with the sector model as the model size will be less when compared to the 360-degree model. Also, the pressure attentiveness factor can be creating by using the stress linearization principle. Various materials may be tested in the same sector model by developing a code which reduces the analysis time and leads to an optimized model from.

REFERENCES

- [1] Durelli A. J. and Mey W. F., Experimental Stress Analysis, McGraw-Hill Book Company, New York, 1979.
- [2] Durelli A. J., Dally J. W., and Mey W. F., Stress and strength studies on turbine blade attachments, Proceedings of the Society for Experimental Stress Analysis, 1958, X. VI,n.1,pp. 171 - 186.
- [3] UchinoK.,KarniyarnaT.,InamuraT., Sirmokohge K., Aono H., andKawashirna T., Uzree- Dimensional Photoelastic Analysis of Aeroengine Rotary Parts, Photoelasticity: Proceedings of the International Symposium on Photoelasticity, Springer Verlag, New York, 1986, pp. 209 - 214.
- [4] Durelli A. J. and Rajaiah K., Lighter and Stronger, Experimental Mechanics, 1950. November, pp. 369-379.
- [5] Parks V. J. and Sanford R. J., Photoelastic and Holographic Analysis of a Turbine-engine Component, Experimental Mechanics, 1978, September, pp. 328 - 333.
- [6] Parks V. J. and Sanford R. J., Three-Dimensional Photoelastic Stress Analysis of the Dovetail Region of the

- TF-30 Turbine Engine Third-Stage Fan, NRL Report, NRL 8276, Dec. 1978.
- [7] Haake S. J., Patterson E. A., and Wang 2. F., 20 and 30 Separation of Stresses Using Automated Photoelasticity, *Experimental Mechanics*, 1996, v.36, n.3, pp. 269 - 276.
- [8] Durelli A. J., Dally 3. W., and Riley W. F., Stress and strength studies on turbine blade attachments, *Proceedings of the Society for Experimental Stress Analysis*, 1958, v. XVI, n.1, pp. 171 - 186.
- [9] Singh G. D. and Rawtani S, Fir Tree Fastenings of turbo machinery blades - I: Deflection Analysis, *International Journal of Mechanical Science*. 4). no. 6, 1982, pp. 377 - 384.
- [10] Shiratori E Hoshiya M. and Sakurai N., Elastic Design of Fir tree joints for Blade Fastenings, *Bulletin of the Tokyo institute of Technology*. no. 80. 1967. pp. 621-135.
- [11] Kumar, Gurram Narendra Santosh, and A. Srinath. "Exploration of Accelerating Moving Walkway for Futuristic Transport System in Congested and Traffical IJSTR©2019 www.ijstr.org Areas." (2018): 616-624.
- [12] Mallik, K.S.K., Kumar, G.N.S., Balasubramanyam, S., Swetha, D. A review on preparation and structural characterization studies of graphitic carbon nitride (2017) *Journal of Advanced Research in Dynamical and Control Systems*, 9 (Special Issue 14), pp. 1869-1880
- [13] Saikumar, K., V. Rajesh, N. Ramya, S. H. Ahammad, and G. N. S. Kumar. 2019. "A Deep Learning Process for Spine and Heart Segmentation using Pixel-Based Convolutional Networks." *Journal of International Pharmaceutical Research* 46: 278-282. www.scopus.com.
- [14] Raj Kumar, A., G. N. S. Kumar, J. K. Chithanoori, K. S. K. Mallik, P. Srinivas, and S. Hasane Ahammad. 2019. "Design and Analysis of a Heavy Vehicle Chassis by using E-Glass Epoxy & S-2 Glass Materials." *International Journal of Recent Technology and Engineering* 7 (6): 903-905. www.scopus.com.
- [15] Kumar, G. N. S. and A. Srinath. 2018. "An Ergonomical condition's of Pedestrians on Accelerating Moving Walkway: A People Mover System." *International Journal of Mechanical and Production Engineering Research and Development* 8 (Special Issue 7): 1376-1381. www.scopus.com.

AUTHORS:

A.Rahul Kumar.

Asst Prof (RAMACHANDRA COLLEGE OF ENGINEERING)

Raffi Mohammed.

Assoc Prof (RAMACHANDRA COLLEGE OF ENGINEERING)

P. Rajesh.

Asst Prof (RAMACHANDRA COLLEGE OF ENGINEERING)