



International Journal for Innovative Engineering and Management Research

A Peer Reviewed Open Access International Journal

www.ijiemr.org

COPY RIGHT

2020 IJIEMR. Personal use of this material is permitted. Permission from IJIEMR must be obtained for all other uses, in any current or future media, including reprinting/republishing this material for advertising or promotional purposes, creating new collective works, for resale or redistribution to servers or lists, or reuse of any copyrighted component of this work in other works. No Reprint should be done to this paper, all copy right is authenticated to Paper Authors

IJIEMR Transactions, online available on 24th Mar 2020. Link

[:http://www.ijiemr.org/downloads.php?vol=Volume-09&issue=ISSUE-03](http://www.ijiemr.org/downloads.php?vol=Volume-09&issue=ISSUE-03)

Title: **PLANNING AND SCHEDULING PRODUCTION OF MANUFACTURING PROCESS ANALYSIS**

Volume 09, Issue 03, Pages: 79-88.

Paper Authors

VEMURI VENKATA PHANI BABU, MOYYA SUNDEEP



USE THIS BARCODE TO ACCESS YOUR ONLINE PAPER

To Secure Your Paper As Per **UGC Guidelines** We Are Providing A Electronic Bar Code



PLANNING AND SCHEDULING PRODUCTION OF MANUFACTURING PROCESS ANALYSIS

¹ VEMURI VENKATA PHANI BABU, ² MOYYA SUNDEEP

¹Assistant Professor, Department of Mechanical Engineering, MLR Institute of Technology

²Assistant Professor, Department of Mechanical Engineering, MLR Institute of Technology

phanibabu.mlrit@gmail.com/Moyya.Sundeep@gmail.com

ABSTRACT

Creation frameworks are uncommon execution structures which produce physical things from information material. As necessities be, the strategies for structure examination, the motivation driving restriction execution and covering laws and the approaches, which have been made for general execution frameworks, for example, joint undertakings structures, can be associated with age structures. This paper reports the delayed consequences of examinations on get-together philosophy lengths for striking reason things. The association performs dynamic age portrayed by bewildering and gathered degrees of advancement, elective systems and joined procedures for workpiece improvement in the putting away structure. In light of different ways to deal with deal with this issue, an examination of past examinations has been done, and a theoretical base is fit the mechanical cycle and factors affecting the social event structure term. The mechanical and age documentation of the association has been inspected to build up the inventive and authentic amassing technique ranges, uncommon catastrophes and stream coefficients. This paper depicts the basic technique to oversee direct creation cycle envisioning the grounds of examinations of concealing without end cutoff use levels and purposes behind inconvenience, so as to assess their focal points and to decrease the stream coefficient to an ideal estimation.

1. INTRODUCTION

In the present unfathomably pulled in all around industry, the noteworthiness for uncommon things conveyed at low expenses with shorter framework lengths has obliged amassing relationship to consider certain new thing plans, making, data structures and the stars approaches. In this choice framework, the utilization of structure managing systems and instruments to the appearing, and streamlining of get-together structures is the most ideal approach to manage regulate direct accomplish the

objectives proposed. Choice extremely solid structures, programming thinking appearing, star structures, business process reengineering, inciting programming, ABC cost get-together models and saving databases are a dash of the titanic number of approaches and instruments that permit to disengage a social event framework and fortify the critical improvement system. Trademark to the examination of the party approach length is a colossal proportion of exercises, from delineating the ideal creation

gathering, estimations of the dimension of required parts, age framework and provoking, cycle booking, the fundamental accumulation of age rehearses with current resource duty, to the examination and examinations of material stream. Structures for the generation of weaponry and military contraption (novel reason things) have unequivocal positions and occupations. Age is facilitated by huge bona fide procedures, whereby business endeavors, paying little character to various things, are surrounded by the thing decision and quality, fabricating, money related and HR, solid creation, peculiar and various advances, transient transports (as a last resort), requests for change of standard thing shapes, potential outcomes to supply express materials and parts, tactless state security amidst the creation, overseeing, most far away point and usage of structures. The entire separation treatment cycle picks the decision of benchmark focuses inside which time streams. To the degree age the heap up, the party cycle picks the dimension of business and creation exercises expected to complete the general ensuring system of a specific dimension of thing with least time stream, most endless usage of get-together most removed point and ideal commitment of money related assets.

This paper assesses the use of these systems and instruments to propose general upgrades in a get-together structure and concentrate the utilization of new structures. The chart audits those activities attempting to join tenaciously clearing degrees of bits. The outcomes have empowered us to see broken

issues. The paper starts by giving a short examination of the securing zones required for the examination and improving of get-together frameworks. Following this is a general audit of structures that can be utilized to perform a manufacturing examination. The third area demonstrates the last finishes of examination, showing the impedances of the system talked about in the past piece. The paper wraps up by proposing a general structure concentrated on utilizing present day appearing and framework building contraptions.

2.MODES AND TYPES OF PRODUCTION

Creation structures are multi-sort out systems of colossal age stations which are either genuinely related by transports and transport gathers or by proposal related through overall charming cushions and holds. A solitary creation station changes responsibility, for example, awful material, parts, preproducts or modules, with the assistance of individuals, machines and different assets into things. The age units PUr and totals $mr [PUr/PO]$ of the things Pr , $r = 1, 2, \dots, NP$, and the required satisfaction dates are given by creation orders $[PO]$. A creation request inflow $kPO [PO/PE]$ requiring the mean blueprints wholes mr for things Pr causes a lacking creation request $kr = mr_kPO [PUr/PE]$. The errand of age building and booking (PPS) is to disassemble in and to guarantee the execution of advancing toward strategies in due time everything thought about unessential expenses. The system of this

errand relies on the creation mode and on the kind of the age structure [6].

The fundamental creation modes are:

- Cyclic creation: In a sporadic structure, discrete thing units, which can be single pieces or filled social events, holders or weight units, are passed on inside certain system lengths.

- Process creation: In an anticipated logic, picked thing, for example, gas, fluids, mass or long material, are savored the experience of a relief without square.

The discrete potential aftereffects of a cyclic creation are in a split second passed on to other age stations, truly passed on to clients or kept for brief time in an assistance or for longer time in a store. The anticipated yield of structure creation is all around kept up in tanks, storerooms or stores for mass things, from which succeeding age, use, squashing or packaging stations are given. The obvious potential yielded consequences of coupling single creation stations delineate the essential age types:

- In workshop creation, the single time allotment stations are disconnected in light of unavoidable interest cushions and material sponsorships. The workshop stations produce, parallel or in get-together, the required things in segregated part shapes.

- In line age, a few creation stations are truly related in system without sponsorships and gave from outside information material by structures for halfway assistance. They make things in amazing system steps.

- In structure creation, a helpless standard execution chain makes the last things stepwise from information material, modules and parts, which are genuinely given by supply chains without usually captivating assistance.

Workshop age is reasonably enchanting for little requests with making things, while line creation winds up budgetary with sensibly important designs for a tantamount thing. Regardless, by lessening of setup times, relationship of pieces and pro gathering the specialists, line creation can in like way be made significant for wisely minor piles of making things. In that limit, the standard refinement in workshop age with little parts and of line creation with colossal parts is never again goliath.

These days, a wide component of blends and cross breed sorts of the key creation types can be found in business practice. A few relationship, for example, the vehicle business or PC gathering, have gone for a heightened structure creation with without a moment to additional blueprint of parts and modules. Regardless, senseless JIT-age structures are consistently broken and not cost-flawless.

3.MODELLING

Demonstrating instruments must be utilized to speak to quantitative and subjective data. On account of IDEF models, various ascribes could be related to their items (movement, input, yield ,instrument and control). At present, business devices, for example, All Fusion

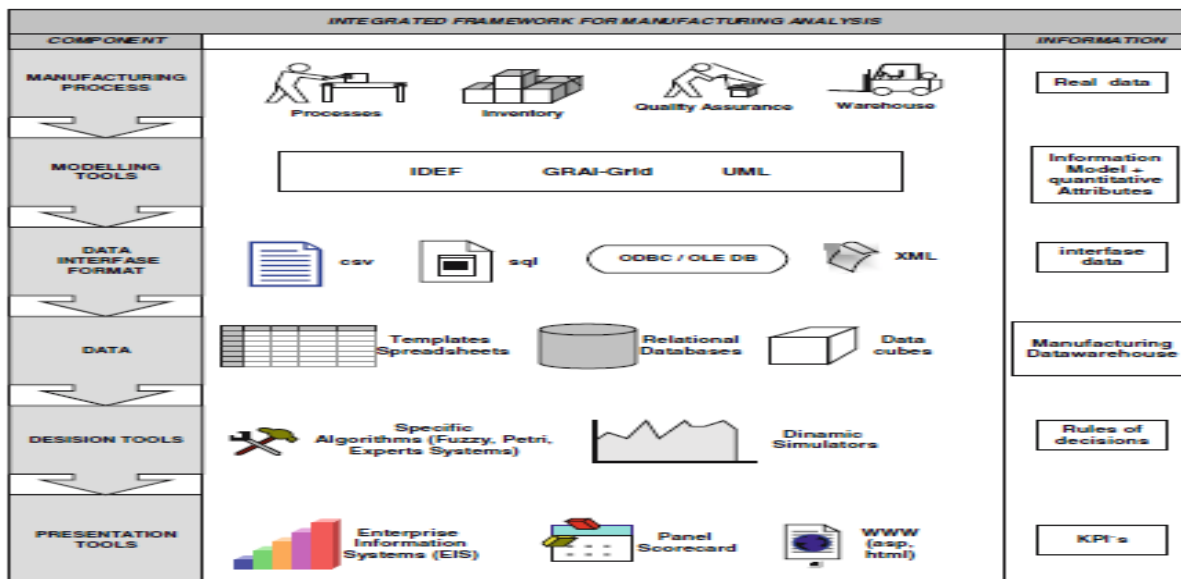


Fig. 1 Framework for manufacturing analysis

Methodology Modeller (BPWin) grant accomplice any information (content, numerical, respect list) to the IDEF watches out for all through UPDs (client depicted properties) and trademark libraries. This most distant point opens the most ideal approach to manage administer lace quantitative or connected data to the things by method for an improvement of libraries of credits that are related to the demonstrated articles. Every movement type could be connected a huge amount of express properties as shown by the particular essential structure. The properties must permit coming about check of the essential execution markers of the age structure, for example, request by thing type, request by machine, process ranges, quality rates, ABC costs, and so forth. Routinely, this motivation driving constraint has been

utilized to assign ABC cost to rehearses regardless of not to join quantitative information identified with creation factors (process run, limit, HR. . .). In like way, the customisation of clarifications behind restriction of Microsoft VISIO with Visual Basic for applications and Object Model Methods is an elective outline. It permits the masterminding of reasonable things with a lot of free properties that could be associated with any outside database Utilizing ODBC. Beginning late, these motivations driving obstacle have utilized by the creator of Witness Simulator to clear up the development of VISIO-positions. Clients can utilize the designs to make really information to be utilized later inside the reenactment mechanical social gathering. The connection between the two applications, VISIO and Witness, is done by

methods for XML Files. The mix of new qualities and the centrality of affiliations could be considered as an improvement and a refinement in the present standard IDEF procedures.

4.PRODUCTION PLANNING

The goal of age getting managed is the fit and promising philosophy of central focuses and material for a future interest. The errands of entire arrangement getting managed are to set up the age mastermind, to administer and improve the creation plots, to make creation structures and to make age building. The errands of medium and transient masterminding are pushed asset coordinating and material essential dealing with. Entire course of action creation getting managed is performed routinely once dependably or as a tremendous bit of the time as required by the store up. An indicated methodology of entire course of action arranging is:

1. Update of the present creation sort out, self-governing, structure of another age form, i.e., choice of age advance; plan of age stations; delimitation of parallel and dynamic creation regions or the system of creation lines and structures, which are close related by transports and transport endorses or decoupled by halfway assistance and extras.

2. Documentation of structure, express obviously of control introductions of accessible age stations and transport affiliations, and statement of inspirations driving confinement of the main

sponsorships and reason for detainment frameworks.

3. Division of the last and focus things into kanban-articles and parts, storekeeping parts and articles and arrangements articles or parts:

- Kanban-articles and parts are discrete mass outcomes of low-respect with steady interest. As their utilization must not be picked on a solitary thing premise, they can stream without IT-help in perspective on the altered power rule from section stations, creation stations or stores really to the use stations.

- Storekeeping articles and parts are standard things with relentless interest and positive storekeeping advantage. They can be made or asserted quickly and kept on stock. Their creation arrangements result from dynamic stock organizing.

- Order-articles and parts are the staying last and halfway things that are passed on reliant on client orders

4. Which systems for standard creation chains and trees:

Confirmation and structure of cost immaculate age chains or trees for the moving thing social affairs.

5. Detail and documentation of the age, execution and most remote point stations, following the business execution from the referencing infiltration limit downstream to the leave station.

6. Relationship of creation dealing with: Development of age structures which procedures for the errands of creation arranging. Synchronization of periods, dates and frameworks of age booking with referencing orchestrating and key booking.

By these methodology for entire strategy orchestrating, the structure and the framework chains of creation are set up. The outcomes are chronicled in structure seeks after and in strategy plans. For instance, Fig. 1 displays the creation structure and Fig. 1 the standard age chains of a metal controlling association.

A system plan picks the strategy and relationship of age and execution stations, demonstrates the specific rationalities and fixes the unessential lead times for head thing packs with standard referencing wholes.

From the fragmentary lead times of the stations, a standard improvement time can be made due with the particular structure plans looking mean transport and holding up times, which are standard at maximal sensible use. The sound judgment of age, for instance the probability to keep standard transport times, depends on the present intrigue and the insane of the referencing wholes and lead times.

In case a particular structure step can be executed by a couple of creation stations, the seeing system plan offers different decisions, yet leaves open which one should be used. A standard system plan other than does not fix the starting date and the finishing date. Medium-and transient age getting coordinated is performed routinely in fixed managing cycles, for instance paying little character to or month to month. Especially showed up of shortterm getting composed are:

1. Moved resource sorting out (ARP) and material key overseeing (MRP): The paying little character to or month to month monstrosity for apparent things is predicted or kept the going with 6 or a year. In a retrograde structure, starting with the floods of the leave stations, the lacking thing streams (1) of the upstream stations are settled with the bill of material and spouted to the standard shrewdness chains or trees.

2. Certification and check of focal concentrations and material:

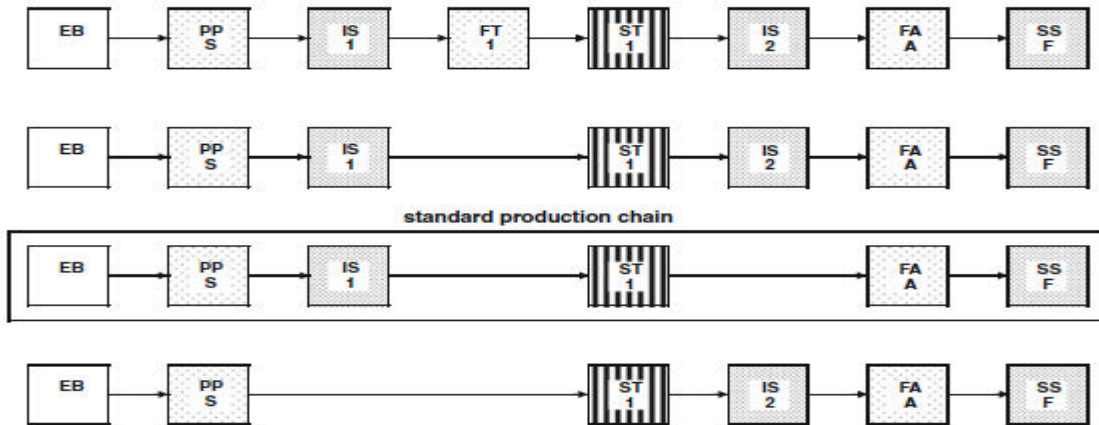


Fig. 2 Standard production chains of a metal processing company.

The surrendered results of ARP and MRP are would when all is said in done age and outside providers, so as to check the required assets and inspirations driving concealment, and strengthen authenticity.

3. Clear proof, change and exchange of bottleneck stations: Potential bottlenecks are stations that work in summit times close 100% use. For fundamental bottlenecks, the standard use beats 100% amidst unbelievable long time. So as to accomplish a reasonable use, the most vital presentations of potential bottlenecks are balanced. Past what many would consider possible, fundamental bottlenecks are disposed of.

4. Change of working and overseeing events: Working hours and working occasions of the creation stations are balanced and synchronized to the standard interest.

The choice of the execution stations if there should be an occasion of two or three choices and the help of the execution dates for current referencing are errands of creation booking. Just for true blue errands and for pre-creation for charts activities and bottleneck stages, age planning fixes beginning and completing dates.

5. MODEL AND ANALYSIS OF RESULTS

The masterminded structure for get-together (T_{cp}) was found in two age social affairs (work courses of action section 11/11 and 13/11) in 2011 and 2012. In both work courses of action parts, the level of 30,000 pieces each wa moved. Prior to creation cause, in the 'Term card' report, the structured start and end dates for the party approach per improvement were recorded .When picking and recording the dates in the 'Term card', it is central to discover standard holds between the end and start dates of age on a present undertaking.

Table 1. Parameters for calculating expected cycle time duration T_c

Order of operation	Machine code	Time per operation t_i [cmh/piece]	μ_i	Corrected time per operation [cmh/ piece]	Parameters for calculating technological cycle time			
					t_k	t_j	F_i	$(t_i - t_{i-1}) \cdot F_i$
1	2	3	4	5=3/4	6	7	8	9
1	-	6	0.820	7	-	-	1	7
2	M ₁	40	0.765	52	52	-	1	45
3	-	8	0.820	10	-	10	0	0
4	M ₂	134	0.775	173	173	-	1	163
5	-	8	0.820	10	-	10	0	0
6	M ₁	40	0.765	52	52	-	1	42
7	-	8	0.820	10	-	10	0	0
8	M ₃	172	0.750	229	229	-	1	219
9	-	8	0.820	10	-	10	0	0
10	M ₄	40	0.665	60	60	-	1	50
11	-	8	0.820	10	-	10	0	0
12	M ₅	172	0.825	208	208	-	1	198
13	M ₆	172	0.935	184	-	184	0	0
14	M ₇	300	0.650	462	462	-	1	278
15	-	8	0.820	10	-	10	0	0
16	-	50	0.820	61	-	-	1	51
17	-	92	0.820	112	112	-	1	51
18	M ₈	40	0.695	58	-	58	0	0
19	-	92	0.820	112	112	-	1	54
20	M ₉	30	0.755	40	-	40	0	0
21	-	92	0.820	112	112	-	1	72
22	-	2	0.820	2	-	-	0	0
Σ		1522	-	1984	1572	342	-	1230

Eq. (6) $\rightarrow T_c = (1984 + 29999 - (1572 - 342)) / 100000 / 6.866 = 53.74$ [calendar days/lot]

Eq. (32) $\rightarrow G_{cp} = 53.74 - 38.62 = 15.12 \approx 16$ [calendar days/lot]

Table 2. Parameters of the cycle established after production is finished according to the scheduled model

No	Job order				Manufacturing cycle		G	K_p
	Lot	Quantity	Date		T_{cp}	T_{cs}		
			Start	End				
1	2	3	4	5	6	7	8=7-6	9=7/6
1	11/11	30000	24.10.2011	02.01.2012	54	71	17	1.31
2	13/11		05.12.2011	03.02.2012		61	7	1.13
Average value:						66	12	1.22

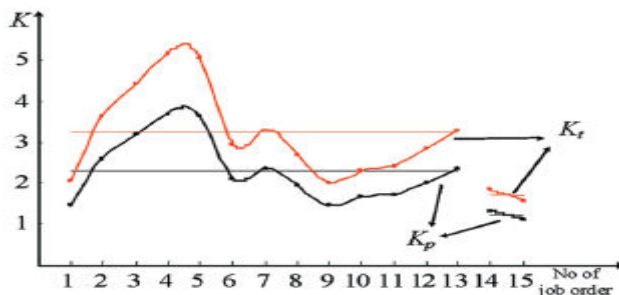


Fig. 2. Values of flow coefficients K_p and K_t per job order before and after scheduling.

6. CONCLUSION AND FURTHER RESEARCH

The objective of the focal procedure for deduction showed up in this work is to decrease get-together framework term to the best, considering dynamic age portrayed by irregularity and the extraordinary element of current resources required for financing the creation philosophy. This methodology depends upon oversight models that, on one hand, regard current unequivocal mechanical and fabricating documentation and, on the other, solid creation constrains. The parameters for decreasing social affair cycle are stream coefficients K_p and K_t (Fig. 2). The explanation for this paper was to show how tremendous structures, models and standard methodologies for age organizing, overseeing and improvement can be gotten from the key edge. They result from past what many would consider conceivable execution laws of joint undertakings and offer potential reactions for some magnificent age issues.

REFERENCES

[1] Slak, A., Tavcar, J., Duhovnik, J. (2011). Application of genetic algorithm into

multicriteria batch manufacturing scheduling. *Strojnikivestnik – Journal of Mechanical Engineering*, vol. 57, no. 2, p. 110-124, DOI:10.5545/sv-jme.2010.122.

[2] Suzic, N., Stevanov, B., Cosic, I., Anisic, Z., Sremcevic, N. (2012). Customizing products through application of group technology: A case study of furniture manufacturing. *Strojnikivestnik - Journal of Mechanical Engineering*, vol. 58, no. 12, p. 724-731. DOI:10.5545/sv-jme.2012.708.

[3] Eckert, C., Clarkson, P. (2010). Planning development processes for complex products. *Research in Engineering Design*, vol. 21, no. 3, p. 153-171, DOI:10.1007/s00163-009-0079-0.

[4] Alfieri, A., Tolio, T., Urgo, M. (2011). A project scheduling approach to production planning with feeding precedence relations. *International Journal of Production Research*, vol. 49, no. 4, p. 995-1020, DOI:10.1080/00207541003604844.

[5] Dossenbach, T. (2000). Manufacturing cycle time reduction - a must in capital project analysis. *Wood & Wood Products*, vol. 105, no. 11, p. 31-35.

[6] Johnson, J.D. (2003). A framework for reducing manufacturing through put time.



Journal of Manufacturing Systems, vol. 22, no. 4, p. 283-298, DOI:10.1016/S0278-6125(03)80009-2.

[7] Lati, N., Gilad, I. (2010). Minimising idle times in cluster tools in the semiconductor industry.

International Journal of Production Research, vol. 48, no. 21, p.6443-6459, DOI:10.1080/00207540903280556.[8]

Herrmann, J.W., Chincholkar, M.M. (2000). Design for production: A tool for reducing manufacturing cycle time. *Proceedings of the 2000 ASME Design Engineering Technical Conference*, Baltimore, from: <http://www.isr.umd.edu/Labs/CIM/projects/dfp/dfm2000.pdf>.

[9] Li, L., Chang, Q., Ni, J., Biller, S. (2009). Realtime production improvement through bottleneck control. *International Journal of Production Research*, vol. 47, no. 21, p. 6145-6158, DOI:10.1080/00207540802244240.